



RĪGA STRADIŅŠ
UNIVERSITY

OPEN
to the world

RĪGA STRADIŅŠ UNIVERSITY IS AN OPEN AND INTERNATIONAL UNIVERSITY FOR EDUCATION, RESEARCH, AND INNOVATION WHERE TODAY'S KNOWLEDGE MEETS TOMORROW'S CHALLENGES.

Over the past seven decades, we have evolved from being a local medical institute to being a modern European university in the fields of medicine, healthcare, and social sciences.

We believe that modern education cannot exist without technology, which is why we invest in world-class simulation equipment that allows our students to develop their skills and competencies in a safe environment. We understand that progress is driven by science, and we strive to actively create a favourable environment for research. We also promote an interdisciplinary approach, because we know that the interaction between fields generates new solutions for today's challenges. All processes take place in a distinctly international environment. One in four students at RSU and one in five lecturers come from abroad, making us the most international university in Latvia and placing us among the leaders in the Baltic states.



Use the QR code to watch a video.

Rīga Stradiņš University

16 Dzirciema iela, Rīga, LV-1007, Latvia

Telephone: +371 67321321

rsu@rsu.lv, www.rsu.lv

 Rīgas Stradiņa universitāte

 rsu.lv

 Rīgas Stradiņa universitāte

 Rīga Stradiņš University

 @RSUinfo

 rsu.lv



Rector
Professor **Aigars Pētersons**

We are driven by excellence and the high standards set by our students, researchers, lecturers, university management, and the administrative team. Linguists may object, but at Rīga Stradiņš University “excellence” is a verb. Excellence is essential to both our daily activities and our goals. I have felt this ever since I joined this university as a medical student. Although initially only healthcare students studied at RSU, over the last 70 years the university has expanded and has now also become the *alma mater* for lawyers, entrepreneurs, political scientists, social anthropologists, psychologists, and communications experts. Our university serves as a launching pad for thousands of talented young people, helping them to begin their careers with competitive research-based knowledge and skills perfected by employing world-class technologies.

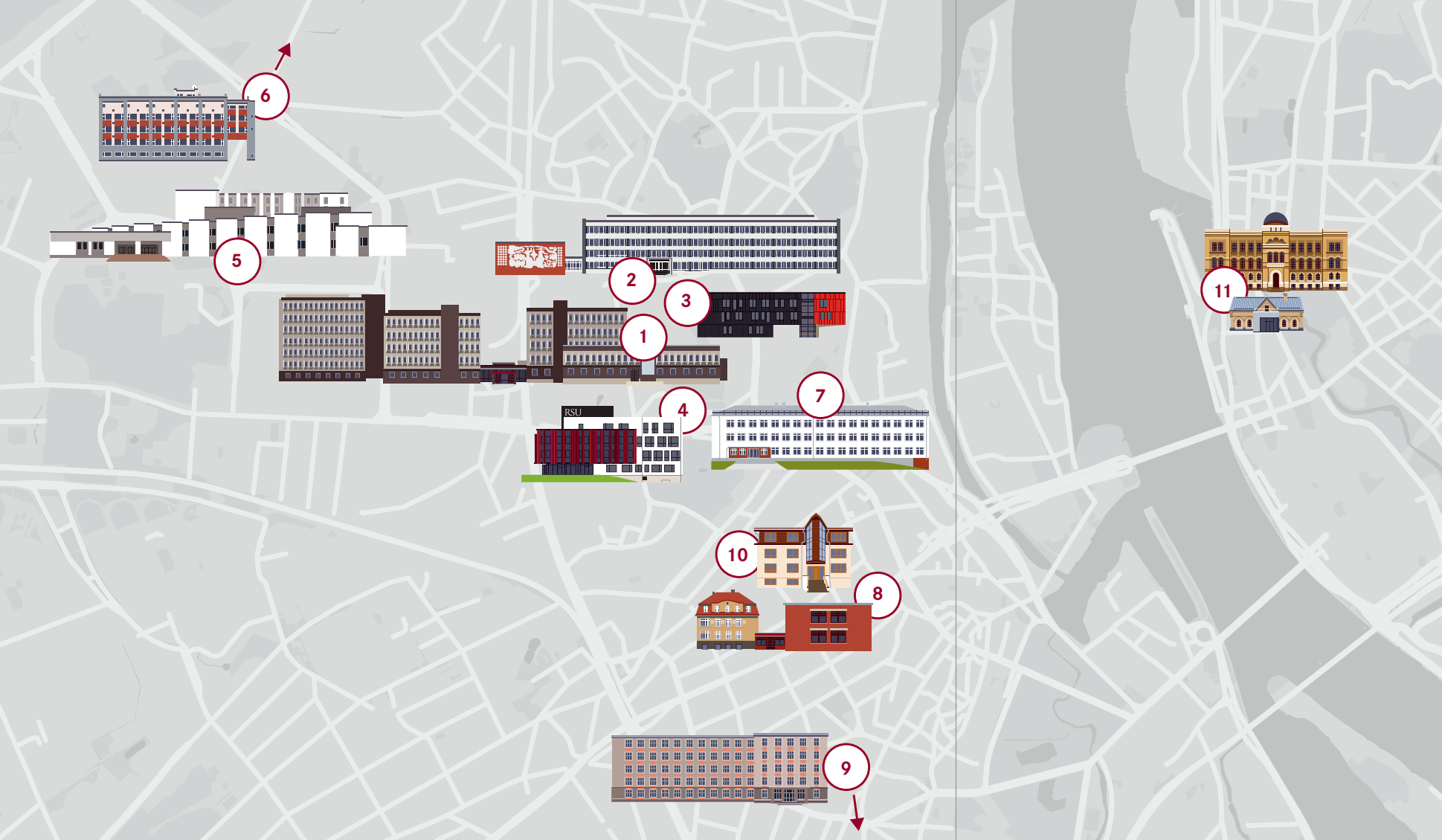
We keep our standards high on both a local and global level and the number of visiting lecturers, researchers, and applicants from abroad, including the number of the countries they represent, increases with each year.

Drop in for a cup of coffee at the university café mid-semester and you will be able to experience the rich diversity of languages and cultures all around you!

Constant movement is one of the prerequisites for higher education. We keep growing in terms of the range and quality of the knowledge we provide, we keep developing by merging social and healthcare sciences, and we keep investing in training centres, simulation technologies, laboratories, research, and innovation.

WITH CONFIDENTENCE

“OUR EXPERIENCE LETS US FEEL CONFIDENT ABOUT A FUTURE WITH NO BORDERS ON MAPS OR LIMITS TO HUMAN OPPORTUNITIES.”



- 1 *RSU Main Building
16 Dzirciema iela*
- 2 *RSU Institute of Stomatology
20 Dzirciema iela*
- 3 *RSU Student Hostel
5 Dārza iela*
- 4 *RSU Pharmaceutical Study and
Science Complex
21 Konsula iela*
- 5 *RSU Medical Education Technology Centre
26A Anniņmuižas bulvāris*
- 6 *RSU Science Hub "Kleisti"
5 Rātsupītes iela*
- 7 *RSU Study Premises
9A Kuldīgas iela*
- 8 *RSU Study Premises
14/14A Baložu iela*
- 9 *RSU Student Hostel
17 Mārupes iela*
- 10 *RSU Study premises, Clinic of
Psychosomatic
Medicine and Psychotherapy
30 Kristapa iela*
- 11 *RSU Anatomy Museum and
Anatomical Theatre
9 Kronvalda bulvāris*

STUDY AND RESEARCH CENTRES, CLINICAL TRAINING CENTRES, INSTITUTES, MUSEUMS, AND STUDENT HOSTELS: RSU ON THE RIGA MAP

Developing the role that universities play in the urban environment has been a point of strategic importance in the Latvian capital for years. Knowledge Mile is a hub for innovation and science currently being developed in Pārdaugava. As an active and international centre for education, RSU has a natural place on Knowledge Mile and contributes to the cosmopolitan atmosphere of Riga.

The RSU study process mostly takes place

on the student campus in Pārdaugava that consists of the RSU Main Building at 16 Dzirciema iela, the adjacent Institute of Stomatology, the newly built Student Hostel at 5 Dārza iela, with Inspiration Park at the centre. The RSU Pharmaceutical Study and Science Complex is also located nearby. The RSU Medical Education Technology Centre lies in Imanta, at 26A Anniņmuižas bulvāris, and the RSU Science Hub "Kleisti" is also located in Pārdaugava. In

addition, the buildings at 9A Kuldīgas iela and 14/14A Baložu iela are being renovated and adapted for the university's use. The largest RSU Student Hostel (at 17 and 17A Mārupes iela), the Department of Psychosomatic Medicine and Psychotherapy, as well as the Clinic of Psychosomatic Medicine and Psychotherapy (at 30 Kristapa iela) are all located in Āgenskalns.

The RSU Anatomical Theatre and the new Anatomy Museum at 9 Kronvalda bulvāris are an integral part of the university's study and research centre, and the university has clinical departments and clinical study centres at all the largest hospitals in Riga.

A map of the capital doesn't reach far enough to display the entirety of what

RSU is – RSU has a branch in Liepāja which is the only higher education institution in the field of healthcare in Kurzeme. RSU also cooperates with several regional hospitals: RSU owns shares in Daugavpils Regional Hospital, the North-Kurzeme Regional Hospital, Vidzeme Hospital, and Liepāja Regional Hospital. RSU transcends national borders through its partnerships with universities and clinics abroad: eight RSU clinical training centres operate in Germany, two in Israel, and one in Italy. In total, long-term cooperation agreements have been established with 11 foreign clinics, and there are plans to increase this number by developing partnerships in Scandinavia as well in the near future.

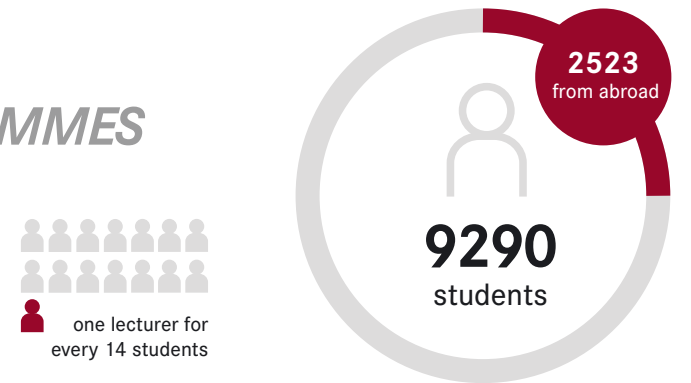
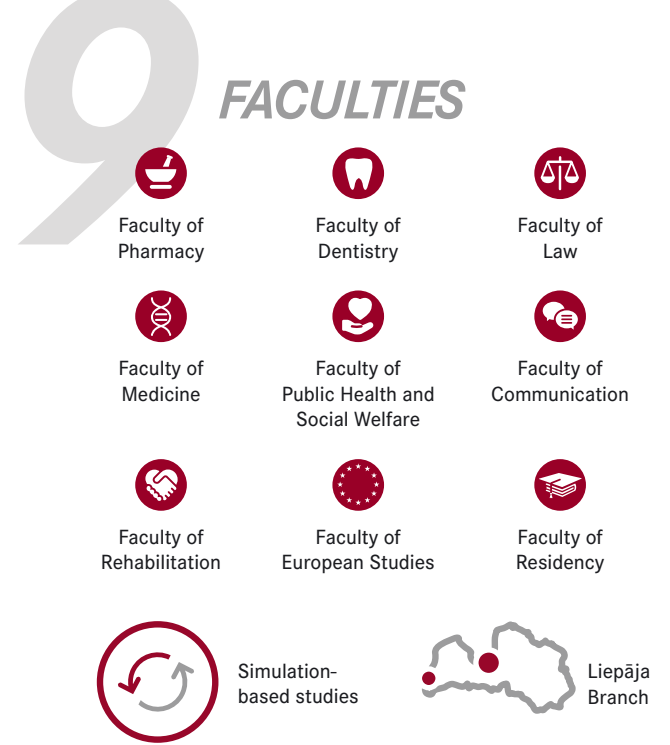
RSU OFFERS INTERDISCIPLINARY AND INTERNATIONALLY RECOGNISED EDUCATION BASED IN RESEARCH AND SIMULATION.

OUR STRENGTHS



Times Higher Education World University Rankings 2022 (501-600 place)

QS World University Rankings 2022 (801-1000 place)



* CERTUS Think Tank. RSU and export of higher education, 2020



“WE PROMOTE THE UNDERSTANDING THAT ALL STUDENTS CAN USE THEIR EXPERIENCE TO IMPROVE AND DEVELOP RSU.”

Vice-Rector for Studies,
Professor Tatjana Koķe

A STUDENT-CENTRED UNIVERSITY

Studies are a two-way street – we believe that the more students are heard during the study process, the more successful the university’s development will be. This is exactly why students are at the centre of all processes at RSU – all important decisions to improve study contents and quality as well as the learning environment are taken together. We are also developing our scholarship programme and support measures for both Latvian and international students. We provide consultations and a mentor system that has already proven their worth during the pandemic. The university’s IT infrastructure and smart technical solutions that have been arranged in advance have also paid off during this time. Taking student’s expectations and needs into account, we intend to maintain remote learning and distance learning opportunities for certain study programmes in the post-pandemic period. Making the university accessible for all students is a priority at RSU, which includes students with visual, hearing, movement, or other disabilities. We are pioneers among Latvian universities in creating equal opportunities for

people with disabilities to be able to get an education. The measures the university has taken range from environmental accessibility to adapting study materials and introducing innovative learning methods.

This approach has resulted in increased participation and responsibility on the part of the students themselves. Our cooperation partners have also acknowledged these improvements by giving RSU the *Peer Assessment of Student-Centred Learning* (PASCL) award, coordinated by the European Student Union, for being a university where youth actively participate in improving the study process.

Students also appreciate the fact that lectures and classes at RSU take place in small groups to ensure a personalised approach (the proportion of students to lecturers at RSU is 14:1). The university offers its lecturers opportunities for continuous development and to upgrade their qualifications and skills with lectures, classes, consultations, and other activities organised by the Centre for Educational Growth.





GROWTH REQUIRES

RE- SEARCH

Vice-Rector for Science
Agrita Kiopa

“BY RESPONDING TO IMPORTANT SOCIAL ISSUES SCIENCE CAN IMPROVE THE QUALITY OF LIFE BY FIND SOLUTIONS THAT LEAD TO HEALTHIER, LONGER, AND MORE EXCITING LIVES.”

More than 360 researchers, assistants, administrative, and support staff are currently working in the field of science at our university. From 2015 to 2020, RSU invested 52.9M euros in science.

RSU organises RSU Research Week every two years. This is an international, multidisciplinary event for both experienced and prospective researchers, as well as for industry representatives, strategic partners, and other interested parties. It

is an opportunity to participate in thesis competitions, to apply to international publications, and to make new professional contacts. Research Week 2021 was like a marathon of five consecutive international conferences conferences - more than 1,300 presentations were given by scientists from 45 countries, and 6,463 people participated online. This is the biggest event in Latvian science and covers global trends in medicine, healthcare, and social sciences.





AN INTER- DISCI- PLINARY APPROACH

CREATES INNOVATIVE SOLUTIONS

Director of the Centre for Educational Growth,
Associate Professor **Nora Jansone-Ratinika**

“SUSTAINABLE INNOVATIONS IN EDUCATION AND RESEARCH DO NOT OCCUR IN ONE STRICTLY DELINEATED AREA JUST LIKE IN NATURE, SUSTAINABLE INNOVATIONS HAVING AN INTERDISCIPLINARY VISION IS A PREREQUISITE FOR DEVELOPMENT.”

To keep up with the times, we understand that complicated contemporary challenges call for solutions that can only be found by combining knowledge from different academic disciplines. RSU therefore implements an interdisciplinary approach on a broad scale.

The coexistence of different disciplines makes it easier to combine the minds and strengths of professionals from these varied fields and branches. This has resulted in several innovative study programmes, for instance Medical Engineering and Physics, Health

Communication, and Management Science, which provides the opportunity to specialise in health management.

Scientific institutions and research teams at RSU are used to interdisciplinary work: the Latvian Clinical Personality Test is currently being developed by bringing together psychologists and neurologists; the Internet Aggressiveness Index research tool is being developed by communications and IT experts. Many other such research projects are currently underway. other such research projects currently underway.





SIMU- LATION

***- BASED
STUDIES AS A
SAFE TRAINING
GROUND***

***“RSU IS LATVIA’S
FLAGSHIP UNIVERSITY
WHEN IT COMES TO
SIMULATION-BASED
TECHNOLOGIES IN
MEDICAL EDUCATION.
WE INVEST AND CAN
CLEARLY SEE THESE
TECHNOLOGIES
WORKING FOR OUR
ULTIMATE GOAL –
PATIENT SAFETY.”***

Vice-Rector for Health Studies,
Professor **Guntis Bahs**

To ensure modern and up-to-date education, RSU has invested over 5M euros in simulation-based studies over a five-year period. This amount is a combination of the university’s own capital and funding from EU structural funds. We have developed a system for pre-clinic simulations, team and process simulations, and hospital simulations.

Almost 3M euros have been invested in the RSU Medical Education Technology Centre that opened in 2013 and is the largest of its kind in the Baltics. More than 25,000 students and medical residents have studied and enhanced their skills there, appreciating the fact that all the necessary equipment is based in one place – moulages, mannequins, simulators. It is part of medical students’ daily lives to collaborate closely with medical institutions and we therefore cooperate with clinical university hospitals, regional hospitals, and outpatient medical institutions in Latvia as well as with international clinics in Germany, Italy, and Israel where we have established training centres, signed cooperation agreements, and arranged placement opportunities.





OUR STUDENTS HAVE
THE ADVANTAGE OF

TRAINING IN PRACTICE

“A SAFE ENVIRONMENT WHERE YOU CAN ASK QUESTIONS, TRY NEW THINGS, FAIL, AND TRY AGAIN, IS ONE OF THE ASPECTS OF RSU THAT OUR STUDENTS APPRECIATE THE MOST. THE STUDENT BROADCASTING NETWORK SKAĻĀK AND THE INVESTIGATIVE JOURNALISM MAGAZINE INQUISITIO SERVE AS PLATFORMS THAT ALLOW PROSPECTIVE COMMUNICATION SPECIALISTS TO REACH PROFESSIONAL HEIGHTS.”

Professor **Anda Rožukalne**

Using the university as a safe training ground is a privilege that not only healthcare students can enjoy. Prospective journalists and photographers can develop their skills and competencies at the student broadcasting network *Skaļāk* (Louder) and the investigative journalism magazine *Inquisitio*, future lawyers can use

polygraphs and perform simulated crime scene investigations at a forensic laboratory, prospective political scientists can simulate diplomatic negotiations, while future entrepreneurs can develop their ideas in the B-Space business incubator. Simulation-based education is one of the strongest fundamental pillars of RSU.





OPEN TO

THE WORLD

Vice-Rector for Administration and Development **Toms Baumanis**

“INTERNATIONAL STUDENTS CHOOSE OUR UNIVERSITY TO GAIN KNOWLEDGE AND SKILLS, AS WELL AS TO CONTRIBUTE. THIS DIVERSITY OF VIEWPOINTS, CULTURES, AND LANGUAGES ENRICHES US AND OUR ENVIRONMENT.”

Although RSU is a relatively small university by international standards, we have successfully made a name for ourselves on the world map and managed to attract students from more than 50 countries. Most international students at RSU come from Germany, Sweden, Finland, Norway, Italy, and Israel, but we also have students from such distant countries as the USA, Canada, and South Korea.

Sometimes, when walking through the hallways of the university, the diversity of languages, cultures, and experiences can make you feel like the whole world is at your fingertips. A quarter of our students come from abroad. They are attracted to RSU because of the quality of studies, the comfortable lifestyle they can enjoy, as well as the astonishing architecture, culture, art, music, and food available to them in the vibrant capital city.

Internationality is also a keyword for our teaching staff as one in five lecturers comes from

abroad, while our Latvian lecturers actively take part in ERASMUS+ and other international mobility programmes. Through collaborations between local and international lecturers and industry organisations, RSU is developing new internationally competitive study programmes in English. In addition to the medicine and healthcare programmes that have been honed for years, RSU has created new study opportunities to study social sciences in English at all study levels.

The success of the work we have put in is widely acknowledged and recognised: RSU was given the Export Champion Award by the Investment and Development Agency of Latvia, the *Latvji, brauciet jūrīņā* award by the Latvian Chamber of Commerce and Industry, and the Quality Innovation Award by the President of Finland. Furthermore, we have also been recognised as having the best reputation among Latvian universities for many years in a row.



